



South West Chilterns Community Board minutes

Minutes of the meeting of the South West Chilterns Community Board held on Wednesday 4 October 2023 in Lane End Youth and Community Centre, Edmunds Road, Lane End, HP14 3EJ, commencing at 6.30 pm and concluding at 8.24 pm.

BC Councillors present

M Turner (Chairman), C Heap (Vice-Chairman), D Barnes, A Collingwood, D Johncock, S Kayani, N Marshall, Z Mohammed, J Towns, D Watson and S Wilson

Town/Parish Councils and other organisations present

Fawley Meeting, Hambleden Parish Council, Ibstone Parish Council, Little Marlow Parish Council, Medmenham Parish Council and Turville Parish Council

Others in attendance

M Devlin, J Binning, A Jenner and T Ellis (Buckinghamshire Council); A Cydzik, J Shrage and P Robinson (Thames Valley Police); P Thomas and J Eyres (Finings Wood); A Knomes (farmer); T Howard-Jones (Cholsey Grange Farm); N Marriner (Chiltern Conservation Board); T Farnfield (Wild Marlow/Marlow Energy Group); M Bewley (Arc Bucks) and L Johncock (resident)

Agenda Item

1 The Chairman's Welcome

Mark Turner (Chairman) welcomed everyone to the meeting.

2 Apologies for Absence

Councillor Richard Scott – Marlow Town Council
Cllr Sue Wagner – Wooburn Green Parish Council
Verity West – Wild Marlow
Hayley Glasgow (Council) – Lane End Parish Council
Richard Parker
Councillor Penny Drayton – Committee Member
Hedsor Meeting
Great Marlow Parish Council
Little Marlow Parish Council
Marlow Bottom Parish Council

3 Declarations of interest

There were no declarations of interest.

4 Notes of the last meeting

The notes from the last meeting were approved.

5 Rural Crime in the South West Chilterns Community Board Area

Presentation carried out by Thames Valley Police (TVP) – Agata Cydzik, Jennifer Shrage and Pete Robinson – (see attached).

The presentation gave an overview of the following:

- The meaning of rural crime.
- The statistics in terms of agricultural crime, environmental crime, heritage crime and wildlife crime.
- The role of Neighbourhood Police Teams, the Rural Crime Taskforce and Horse Watch.
- Information on the Country Watch Packs.

Comments:

Decisions were soon to be taken on the Wooburn Parking Review and South West Chilterns Parking Review.

A local Volkswagen van dealership had six catalytic converters stolen over the last five days – the premises did not have CCTV. If there were any other incidents, they should be reported to TVP.

6 Fighting for Survival via Diversification

Presentation carried out by Alex Nelms (AN) and Ted Howard-Jones (THJ) - (see attached) on:

- The difficulties faced by farmers in Buckinghamshire.
- The importance of agriculture.
- The reasons why farmers need to diversify, including some diversification success stories to keep them afloat.
- What support/forums are working and what could be better, particularly around the Planning process.

Questions:

It was disappointing to hear the experience farmers were facing with Planning. THJ was asked if he was willing to attend another Community Board meeting with our Planners in attendance. THJ said he would be happy to attend. THJ added that the issue was perhaps perception rather than reality. Planners may want farmers to be successful but it was not perceived in this way. It was an expensive “nut to crack”.

In terms of food security since lockdown and Ukraine – were things going in the right direction locally and nationally? AN gave an example of Greg Smith inserting in the National Planning Framework, a presumption that when considering a site for planning, you consider whether it may have an impact on food production. There was a case with solar panels being placed on Grade 1 and 2 land - you were taking out food production in favour of energy production and there wasn't a presumption to approve that you had to consider the impact on food production. This had never

been considered before on how you were reducing the lands capacity to grow food. This was an example of positive change.

AN felt that the more worrying thing would be the pressures our horticultural businesses were facing from supermarkets. We were 16% self-sufficient in fruit and veg and there was a massive opportunity for growth, but it wasn't materialising. This may be down to buying practices in supermarkets. We have some of the lowest prices in the OECD as our supermarkets are the lowest of our neighbours. However, where we had the veg shortages earlier in the year, we would pay a grower in Morocco or Spain £1.60 a kilo, but in Germany they paid £1.90, so the growers would sell to the Germans. AN added that we were not willing to pay a fair price for produce. The NFU have advised Government that food security was being threatened and jeopardised by the lack of support. Consumers could also help in the way they shop as British farmers were being penalised because we want strawberries in December and avocados in January which was not natural. The air miles, travel and consumer choices were not resulting in good outcomes and was at the detriment of British growers. Some of this was on the consumer and where it shopped.

7 The Hedgerow Project

Presentation (with video) carried out by Nick Marriner (NM)– Chiltern Conservation Board (see attached).

Questions:

We had a dry summer last year, a challenge for hedgerows, and a wet one this year – how have the hedgerows survived? NM said the conditions were perfect this year with a 95% success rate, but last year it was a 50-60% survival rate, so everything that was lost in the drought was replaced.

A hedge on the south side (M40) did not survive due to badger and deer pressure – this was a concern. NM confirmed that they had made changes this year. As part of the coppicing work, instead of burning it they chipped it and recycled as malt which made a difference in keeping the sun off the roots and the moisture in the plants. They also planted earlier this year so the roots had a chance to establish.

A major farm owner who was not located in the farm cluster asked what opportunities there were for more farmers to get involved. NW said this was tricky balance for a project of this size. The balance in the planning was to have a concentrated resource which made a significant difference instead of spreading them thin, so they had to make some decisions on scale. For now, the cluster was 18 farms and there had been discussions on bringing one or two more in. There were other ways the Conservation Board could support farmers in the Chilterns as they had a grant "Farming Protective Landscape scheme" so if farmers were in the Chilterns, they might be eligible for that. NW said he could provide the details of who to contact for further information and help. There were also other funding pots that the Chiltern Conversation Board could help with.

8 Community Matters

Buckinghamshire Council Corporate update: presented by Tony Ellis, Service Director (see attached).

Community Board update and how it worked: presented by Makyla Devlin, Senior Community Board (see attached)

Budget/Funding update: presented by Makyla Devlin (see attached).

Questions:

When was year-end? MD confirmed it as 31st March 2024. In terms of applications, taking into account processing times, would like to see before 31 December to allow for processing time.

Where was the Community Board with highways projects that were carried forward from 2022/23? Mark Turner (MT) stated that a meeting had been had with John Pateman before the last Council meeting, and as a result we were now moving forward. MT did not have the information to hand and said he could forward it on. He added that the contract transition had caused some delays.

9 Date of the next meeting

The meeting was adjourned at 8.24pm. The next meeting will be on 14th February 2024 – location to be confirmed (looking to change the date)



South West Chilterns Community Board Meeting

Chairman Cllr Mark Turner

Vice Chairman Cllr Carol Heap

4 October 2023

Lane End Youth and Community Centre



Agenda

Chairman's Welcome

Apologies for absence

Declarations of Interest

Notes of Last Meeting

Presentation – Rural Crime across the Board - TVP

Presentation – Fighting for Survival vs Diversification – Alex Nelms and Ted Howard-Jones

Presentation – The Hedgerow Project – Nick Marriner, Chiltern Conservation

Community Matters:

Buckinghamshire Council Corporate Update – Tony Ellis – Service Director,

Buckinghamshire Council

Funding update – Makyla Devlin – Senior Community Board Manager

Public questions received in advance – to be presented by the Chairman

Any Other Business

Date of the next meetings – 14 February 2024 – (location and venue to be confirmed)



Rural Crime Across the Board



Community Board

04th October 2023

Lane End

PC Robinson P4571, PCSO Shraga C8632, PCSO Cydzik C0146

What is Rural Crime?

- ▶ TVP Definition of rural crime;
- ▶ Agricultural crime constitutes any statutory or common law offence which may be committed against people in agricultural communities, their lands, businesses and property (property includes plant and agricultural machinery and animals such as livestock and horses).
- ▶ Environmental crime constitutes an illegal act which directly harms the environment. This element of the strategy will be largely delivered by supporting partner agencies.
- ▶ Heritage crime constitutes any offence which harms the value of heritage assets and their settings.
- ▶ Wildlife crime constitutes any unlawful act or omission, which affects any wild creature, plant or habitat.

The Statistics

01/01/2023 - Present

Page 10

- ▶ Agricultural Crime;
 - ▶ 7 Burglaries residential and business
 - ▶ 4 Criminal Damage
 - ▶ 2 Dangerous Dogs
 - ▶ 2 Public Order Offences
 - ▶ 5 Theft
- ▶ Environmental Crime
 - ▶ 1 Flytipping
- ▶ Heritage Crime
 - ▶ No Reports made.
- ▶ Wildlife Crime;
 - ▶ 4 Misc Wildlife Crimes
 - ▶ 6 Hare Coursing

What We Do

- ▶ Neighbourhood Police Teams
 - ▶ Awareness
 - ▶ Have your say meetings
 - ▶ Tool marking
 - ▶ Hotspot patrols
 - ▶ Signage
- ▶ Rural Crime Taskforce
- ▶ Horse Watch
 - ▶ Marking of equipment
 - ▶ Lost/escaped horses
- ▶ Country Watch Packs

Questions



Fighting for Survival via Diversification

Page 13

Alex Nelms

Ted Howard-Jones



Fighting for Survival

via rural diversification

Agenda

Setting the scene - the average farm

Why we need to diversify

Some diversification success stories

What's working - and what's not

How you can help

Why is agriculture important?

Agriculture provides half of the food we eat, employs almost half a million people and is a key part of the food and drink sector.

In 2021, farmers and land managers managed 71% of the UK's land, and through them we can safeguard our natural environment and ensure the highest standards of animal and plant health.

Many farmers and landowners are actively playing their part to conserve and enhance the countryside's wide network of trees, hedgerows, ponds, ditches and other watercourses.

Source - Govt. Evidence pack



NO FARMER, NO FOOD

49% of British veg farmers fear closure in the next year. Supermarkets are a leading cause.

GET
FAIR ABOUT
FARMING

SIGN THE PETITION ►

THE RIVERFORD ORGANIC FARMERS
ASSOCIATION
PO BOX 100
RIVERFORD
GLoucestershire

RIVERFORD
ORGANIC FARMERS

Average Farm UK

Farm Size - 200 Acres

Age of farmer - 59

As % of Turnover

- Agriculture - 81%
- Diversification - 8%
- Grants - 12%

Average Income - £50K

Cholsey Grange Farm

Farm Size - 198 Acres

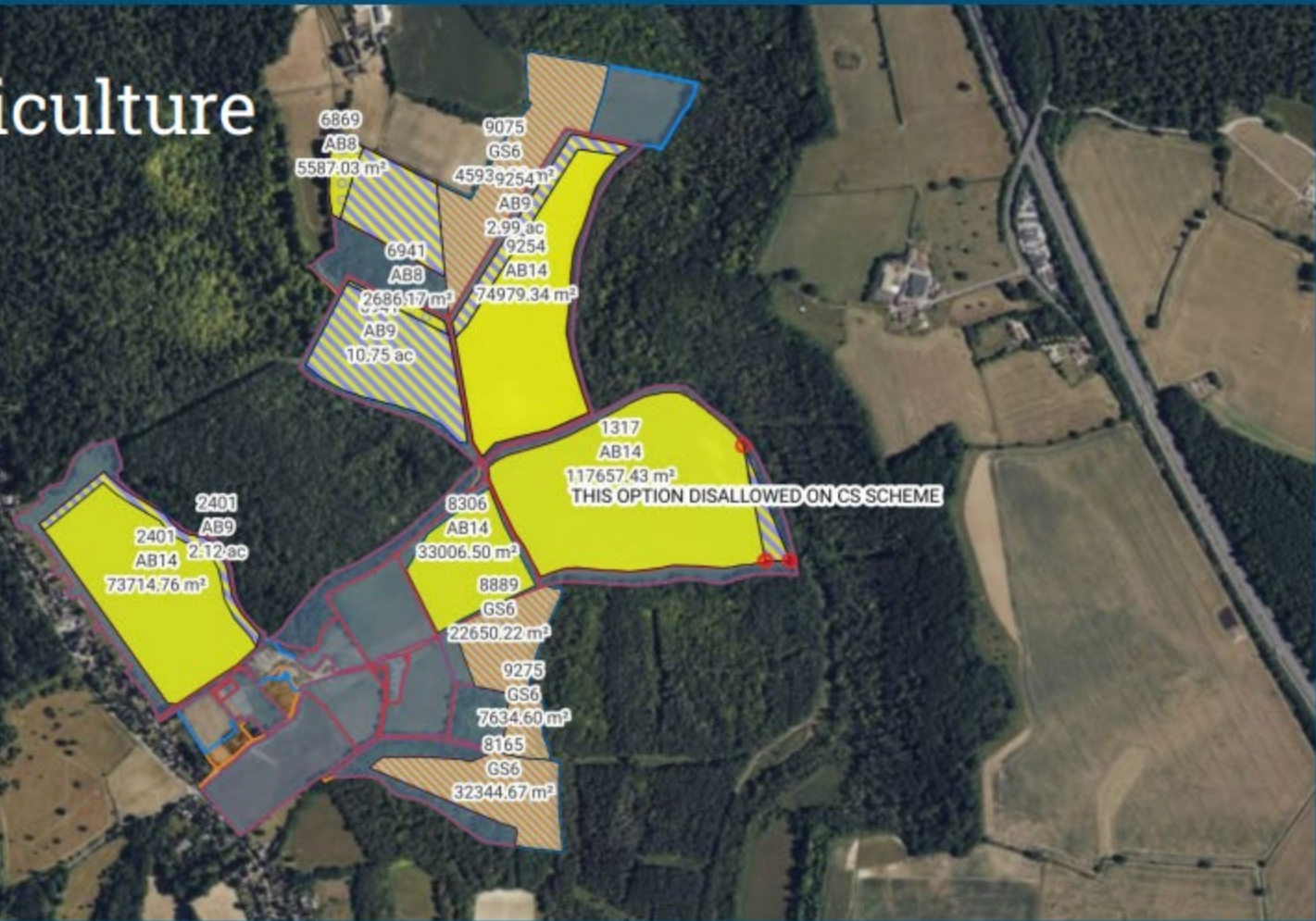
Age of farmer - 60

As % of Turnover

- Agriculture - 16%
- Diversification - 76%
- Grants - 8%

Income - circa £100K

Agriculture

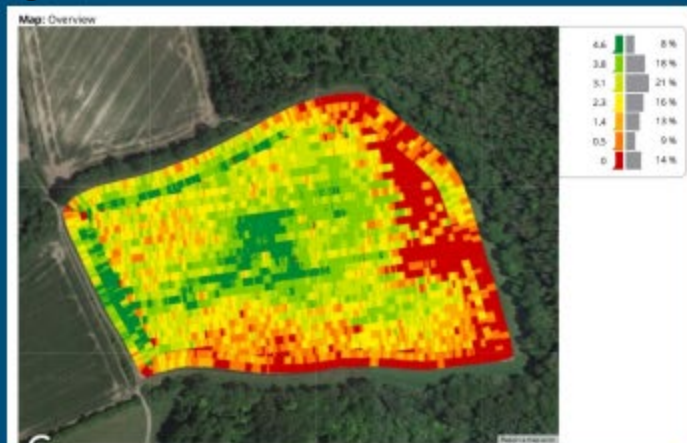


Farming in the Chilterns doesn't pay!

Agriculture Balance Sheet	2019	2020	2021	2022	4 yr Avg
Contractor	£15,819	£11,425	£11,572	£13,361	£13,044
Seeds/Spray Fert	£12,397	£14,371	£18,816	£16,425	£15,502
Sub Total	£28,216	£25,796	£30,388	£29,786	£28,547
Top Sales	£28,490	£30,389	£27,233	£27,334	£28,362
Agriculture Profit/Loss	£274	£4,593	-£3,155	-£2,452	-£185

Reasons

- Poor soil (low natural fertility)
- Difficult to improve the soil (Manure / Sewage Sludge)
- Elevation
- Steep
- Deer damage



The deer problem

In the 1970's there were 300-400K deer in the UK

There are now estimated to be more than 2 Million deer.

Fallow deer are a non-native species and prevalent in many areas of the Chilterns.

They cause road-traffic accidents and massive damage to hedgerows, young trees, woodland understory and farmers crops.





An aerial view of Cholsey Grange Farm taken in 1969

1969

An aerial view of the farm showing many buildings that have since been demolished including the grain drier, chicken sheds, pig units, hay barn and workshops.

In the late 1950's and early 1960's Cholsey Grange Farm had pigs, chickens and sheep. The chicken enterprise numbered 7 large sheds (all now demolished) containing both egg-laying birds and birds for the table. They were fed from wheat grown on the farm and milled on-farm in our own processing mill.

Most notably, Hartmoor Wood (top right of the photo), then owned by Mr. John Fane of Wormsley was clear-felled. It has since regrown through natural regeneration and is now owned by Mr. Michael Wright.



An Aerial view of Cholsey Grange Farm taken in June 2009

2009

40 years later some of the outbuildings remain, many have been demolished or altered shape, whilst a couple of modern agricultural barns have replaced former pig unit and chicken sheds.

The new barns were built to store grain, straw and for lambing the 200-300 Welsh ewes.

Some of the old pigsties and workshops have been converted to offices whilst the old dairy is now home to a skilled cabinet-maker and storage.

The listed oak-framed barn was re-roofed with local, hand-made tiles. It now houses hay, logs and a tractor.

Hartmoor wood is regenerating and is now a mixed woodland with a lot of Ash trees.





An aerial view of Cholsey Grange Farm taken in 1969



An Aerial view of Cholsey Grange Farm taken in June 2009

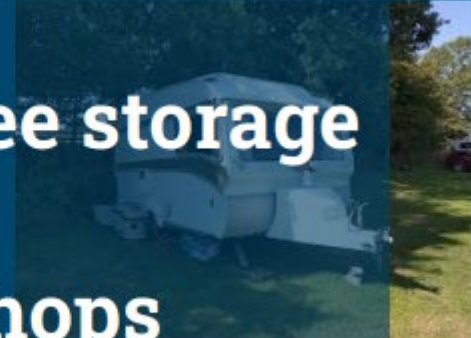
1969

An aerial view of the farm showing many buildings that have since been demolished including the pig shed, chicken sheds, hay barn and workshops.

In the late 1950's and early 1960's Cholsey Grange Farm had pigs, chickens and sheep. The chicken unit was numbered 14 (all now demolished) containing 1000 birds and 10000 eggs a table. They were fed on a diet of ground farm produce in our own processing mill.

Most notably, Hartm... Mr. John... through natural regeneration and is now owned by Mr. Michael Wright.

- 1970's Marquee storage
- 1980's Offices
- 1990's Workshops
- 2000 Caravans
- 2015 Horse riding



2009

40 years later some... demolished or altered shape, whilst a couple of modern agricultural barns have replaced former pig unit and chicken sheds.

The new barns were built to store grain, straw and for lambing the 200-300 Welsh ewes.

Some of the existing workshops have been converted to offices whilst the... to... to...

The listed oak-framed barn was re-roofed with local, hand-made tiles. It now houses hay, logs and a tractor.

Hartm... Ash trees.

Multiple income streams keep the farm afloat & help reduce risk

What keeps us afloat?

Turnover

Commercial - 30%

Tourism - 28%

Agriculture - 24%*

Residential - 13%

Other - 5%

*Includes grants

Commercial

- Workshops
- Office
- Storage

Tourism

- Riding Holidays
 - Camping & Self catering
- Caravan Site (5 pitches)
- Park & Ride

Agriculture

- Wheat & Barley
- Stewardship
 - Winter Birdfood
 - Species Rich Grassland etc.

Residential

- Cottages

Other

- Consulting
- Wayleaves
- Shoot

Tourism in the Chilterns

Beautiful Countryside

Book Now



Amazing Hacking

The Chilterns 'Area of Outstanding Natural Beauty' (AONB) is the perfect

Choice of Routes

Over 15 different circular rides direct from our farm take you through lovely villages, through stunning scenery and past country pubs or cafe's where you might want to stop for a coffee or lunch.

Or simply ride round the wide grass margins on our farm. Well signed and plenty of lovely views and uphill canter opportunities. All off road.



Where our riders come from

Day Riders - 45-60 minutes



Holiday Makers 1.5 Hours



Tourism in the Chilterns

[Home](#) / [Certificated Locations](#) / [England](#) / [Buckinghamshire](#) / [Marlow](#) / [Cholsey Grange](#)

Cholsey Grange

Ibstone, High Wycombe, Buckinghamshire, HP14 3XT

[View on map](#)



Serviced pitches with free WiFi



from
£25.00

To book a pitch contact the site directly

[WEBSITE](#)

[EMAIL](#)

SITE OWNER: Mr and Mrs T Howard-Jones

CALL: 07740 298474

Price based on:
Please contact the site directly for details

Overall site rating

Based on 174 reviews



Tranquility

How lucky we were to discover this wonderful site whilst

Tourism in the Chilterns



Page 28

The mediaeval barn is now heated by a large woodburner and can seat up to 80 diners.

Covered outside seating for up to 70.

Please note there is no takeaway option

BOOKING IS ESSENTIAL..... EVEN FOR A DRINK
this is to allow a steady flow of customers for seating and ordering

Please use the booking links on the [Reservations](#) page to make your booking.

If you experience any issues please call us direct on

01491 638213

No need to preorder just get a slot so that we can regulate numbers

What works in Bucks

Rural Forum

Bucks Business First

Chilterns Tourism network

Grants schemes eg LEADER and (we hope) the Rural Prosperity Fund

What could be better

In a word - Planning

Most farmers wishing to diversify either curtail their business ideas or put off their schemes due to worries about planning that they see as;

- Time Consuming - Overly Complex - Expensive Tick Boxes (eg Flood Risk assessments) . Disingenuous.
- The average farmer doesn't have the money or risk appetite for a lengthy planning battle. Hence if farmers want to take the risk they start projects without planning and ask for forgiveness later eg Retrospective.
- Planning is required for all the Grant schemes, but is so slow that many grant deadlines are missed. But Planning dept. seem to be deaf to economic / diversification arguments



Will Dallimore

Has many examples of rural projects that have never gone ahead due to planning issues.

He estimates £5M of grant funding not approved due to PP

Planning fees

Government estimates that the current funding shortfall for the planning service in England is £225M a year.

***Planning fees are set to rise this month
by between 25% and 35%.***

Source: CLA Magazine Oct 2023

A local success story



Laceys Family Farm

Farm Shop and Butcher's

Opening Times:

Tuesday - Friday: 8:30am - 3pm
 Saturday: 8:30am - 4pm
 Sunday: 10am - 3pm
 Monday: Closed



Our farm shop is packed with fresh produce, produced on our own farms in the Chilterns, 20000 or so other local farms.



We farm 450 acres in the beautiful Chiltern Hills in South Buckinghamshire



Our farm shop sells meat produced on our farm and neighbouring farms. Our Butchers shop will cut your joints to order



Contact

Ted Howard-Jones

Cholsey Grange Farm

07740-298-474

ted@countrysidemarketing.co.uk



The Hedgerow Project

Nick Marriner

Chiltern Conservation





CHILTERNs

LANDSCAPE PARTNERSHIP



Build relationships, trust, confidence, capacity and a baseline

Increasing the number of hectares in active and positive management

Habitat conditions improve

Landscape-scale change and species recovery

Page 36

Year 1 - 3



Year 3 - 5



Year 5



Year 10





Farmers driving Natures Recovery in the Chilterns AONB



Supported by the Farming in Protected Landscapes Scheme

Chilterns Farmer Cluster Hedgerow Restoration Project



Chilterns Conservation Board
851 subscribers



Subscribed



16



Share



Download










WIX.com

Create Your Site

Chalk, Cherries & Chairs

Chilterns Conservation Board - 34/54



- 31  32:46 Chilterns Conservation Board
- 32  3:07:45 Tracking the Impact 2021 Programme Review -... Chilterns Conservation Board
- 33  5:08 Chilterns New Shoots - young nature enthusiasts share thei... Chilterns Conservation Board
-  8:31 Chilterns Farmer Cluster Hedgerow Restoration Project Chilterns Conservation Board
- 35  3:06 ITV Meridian's report on Chilterns farmer Andrew... Chilterns Conservation Board
- 36  8:14 The National Hedgelaying Championships, 29th Oct 202... Chilterns Conservation Board
- 37  IN THEIR OWN WORDS: Victorian Child Lacemakers o...

[\(19\) Chilterns Farmer Cluster Hedgerow Restoration Project - YouTube](#)

Wildlife habitat improvement taking place here this winter

An exciting project is underway to create and restore wildlife habitats across the Chilterns. The Chilterns Conservation Board is working with farmers at a landscape scale to improve and connect wildlife habitats.

At Lacey's Farm hedgerow habitat is being increased and improved to encourage natural re-colonisation of rare birds, small mammals, invertebrates, reptiles and amphibians. Across the farm old hedgerows are being rejuvenated by cutting out overgrown and dead wood and planting new saplings in the gaps.

This hedgerow work is part of a plan to maximise valuable wildlife habitat across the whole farm.



Brown
hairstreak



Pipistrelle bat



Yellowhammer



Linnets

For more information see www.chilternsaonb.org/projects/CCC

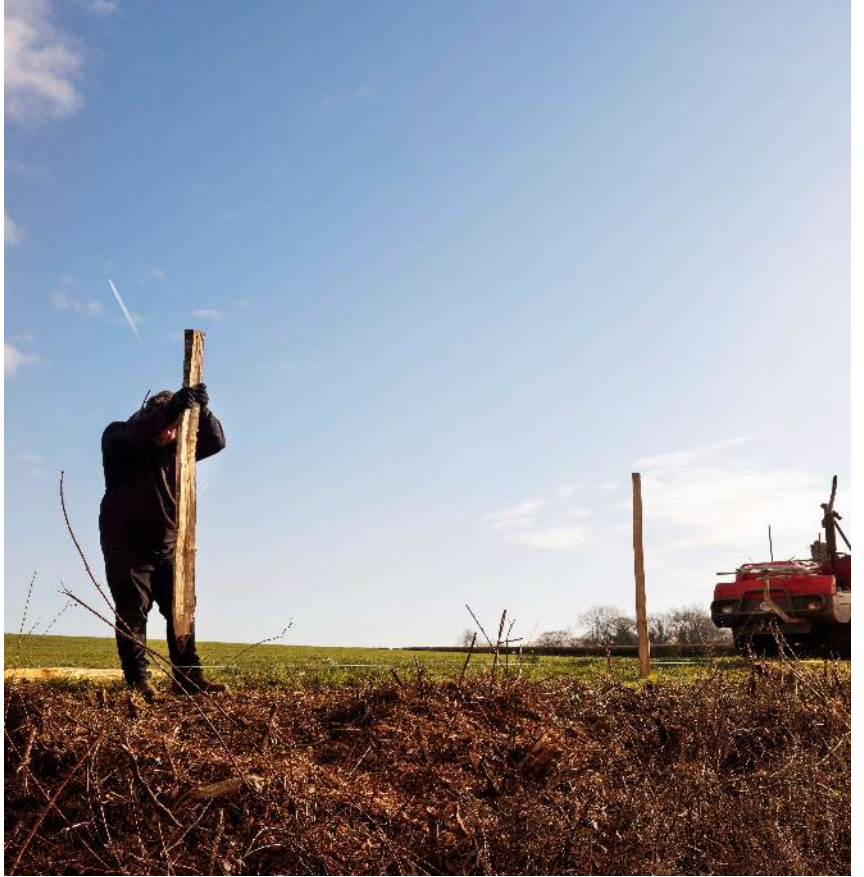
- Planting - 2,059m
- Coppicing - 1,092m
- Fencing - 2,360m
- £41,608 FiPL, NLHF, Farmer
- 5,367 kg CO₂





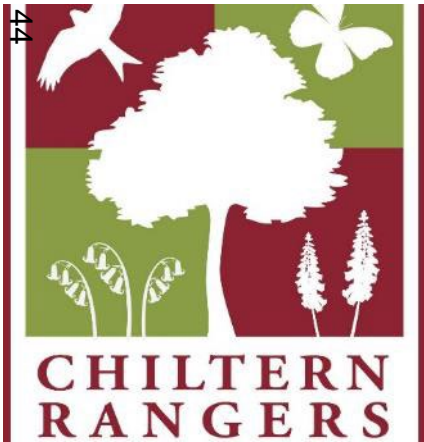








Page 44





ROTHSCHILD
FOUNDATION



Farm Carbon Toolkit



Farm
Carbon
Toolkit

Farm Carbon Toolkit Soil sampling and carbon footprinting

Initial results and feedback session

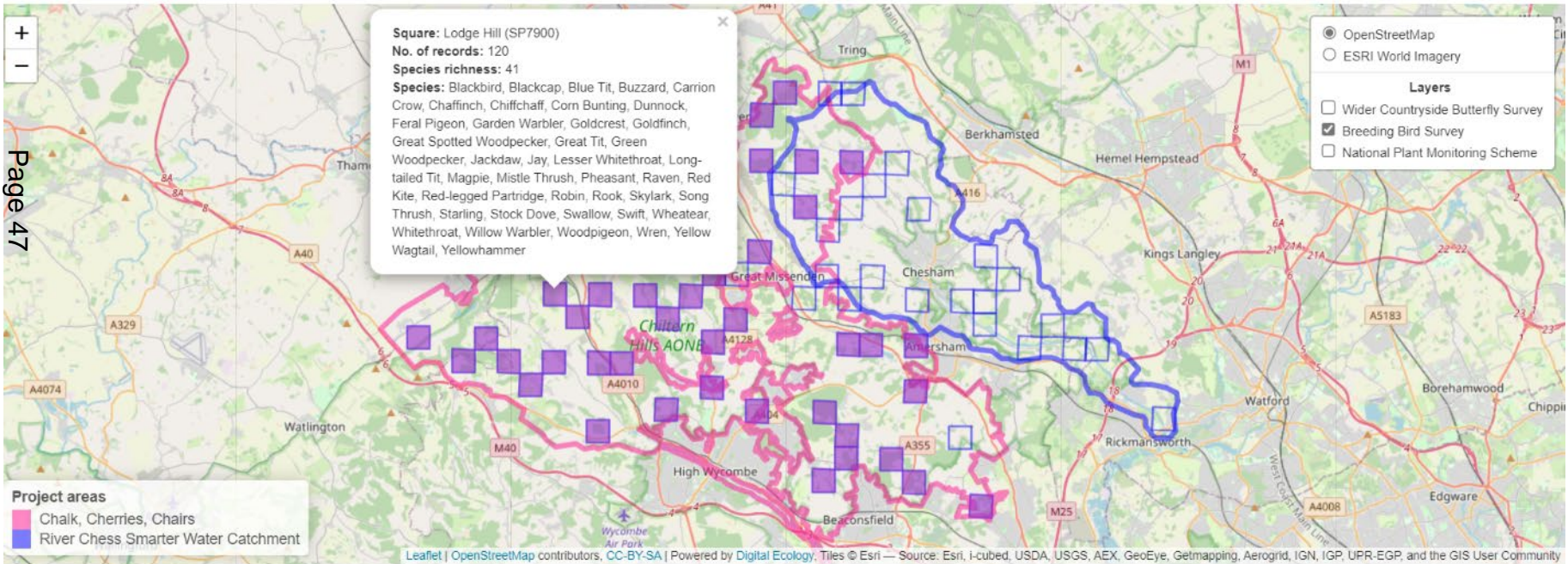
Becky Wilton
19 November 2021





ROTHSCHILD FOUNDATION

- **Advice** - paid for advice for arable & livestock farms on soil health projects
- **Consultancy** - support for applications SFI (e.g., soil health standard)
- **Baselines** - paid for soil sampling across whole farm/targeted fields
- **Trialling new techniques** - e.g., cover cropping, paid for contractor direct drilling
- **Shared projects** - e.g., sourcing grazing for cover crops
- **Training** - e.g., sourcing grazing for cover crops
- **Mentoring** - e.g., 1:1 peer support, Pasture for Life
- **Landscape scale** - planning, monitoring of impact across a wider scale





[Advanced company search](#)

CENTRAL CHILTERNNS FARMER CLUSTER CIC

Company number **15130165**

Follow this company

File for this company

Overview

[Filing history](#)

[People](#)

[More](#)

Registered office address

Kensham Farm Cadmore Common, Cadmore End, High Wycombe, England, HP14 3PR

Company status

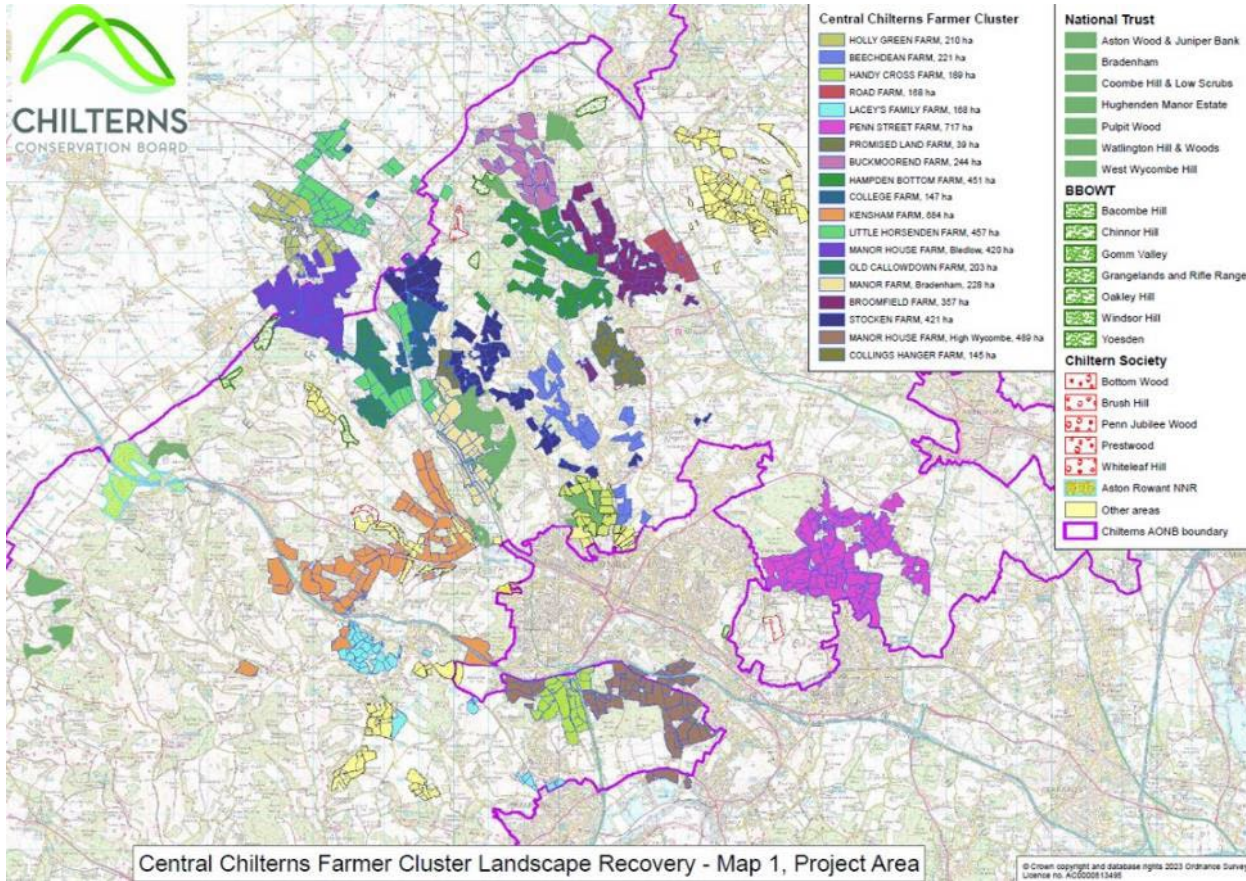
Active

Company type

Private company limited by guarantee without share capital
Community Interest Company (CIC)

Incorporated on

11 September 2023





Community Matters

Buckinghamshire Council Corporate update – Tony Ellis, Service Director

Funding Update – Makyla Devlin, Senior Community Board Manager

Public Questions – received in advance – Chairman Cllr Mark Turner.





Corporate Update

Page 52

Tony Ellis

SWCCB Service Director Champion



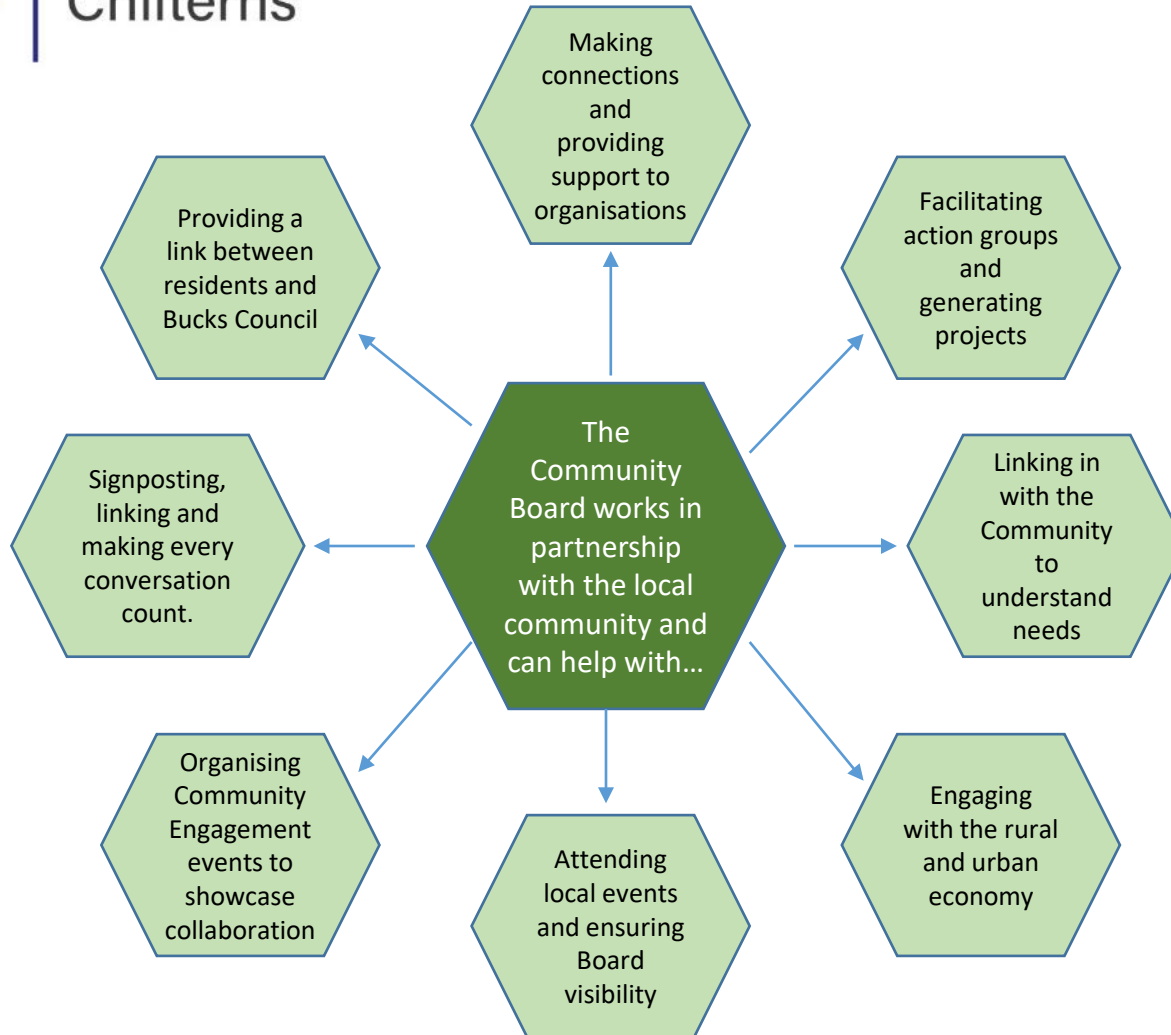


Community Board South West Chilterns

- The Community Board Manager links in with the local community groups and locations on a weekly basis
- Looking to hold weekly drop-ins at both Marlow and Bourne End Libraries and other partnership locations including Parish Councils
- Engaging with community groups through their localised events
- Developing the Community Board Facebook page
- The creation of a Board newsletter is currently underway
- During 2023 so far, South West Chiltern Community Board has funded 4 community projects with 1 being processed through the internal due diligence process with further applications in the pipeline along with 3 highways schemes which have been identified for funding and are still under discussion.
- 2023/2024 budget is £116,402
- There are 4 active and engaging action groups, Community Health and Wellbeing, Economic Development, Urban and Rural, Environment and Climate Change and Highways and Infrastructure. Everyone is welcome to attend the action groups. For further details, please contact Makyla makyla.devlin@buckinghamshire.gov.uk



Community Board South West Chilterns





Funding Update

Page 55

Makyla Devlin

Senior Community Board Manager



Funding Summary Report
South West Chilterns Community Board
04 October 2023

This paper provides a summary of the funding applications received, considered or in the pipeline for your information.

The table below details the current budget position for the South West Chilterns Community Board.

Community Board Fund 23/24	Spend to date (04/10/2023)	Allocated or potential projects to date (04/10/2023)	Remaining budget as of 04/10/2023
£116,402	£11,180.75	£72,316	£32,905.25



Any Other Business?





Dates of Next Meeting

Page 58

The South West Chiltern Community Board next Meeting will be on:

14 February 2024 – (location and venue to be confirmed – looking at options to change the date)



September 2023 Update from BC for CBs

Share your views and help us keep Buckinghamshire safe

The Safer Buckinghamshire Board is a local Community Safety Partnership that brings together experts from the police, fire service, probation, health and social care services. The board develops an annual action plan to reduce crime and anti-social behaviour in Buckinghamshire and help keep it a safe place to live and work.

To help develop this plan, we want to hear from local residents to understand:

- the impact of crime and anti-social behaviour in their local area
- their experience of reporting crimes
- how safe or unsafe they feel in Buckinghamshire

[The survey](#) is open to anyone living, working and/or studying in Buckinghamshire and will be open from 11 September until 29 October.

The results of the survey will be combined with an analysis of all crimes that happen in the county to help develop partnership activities for the following year.

Residents can complete the survey on [Your Voice Bucks](#) and enter into our prize draw to win one of three £100 leisure vouchers*.

A communications toolkit including newsletter copy, social media copy/graphics and a digital poster will be provided before the survey launches so you can share with your local communities.

*Terms and Conditions apply

Local Plan – progress and next steps

The Local Plan for Buckinghamshire (LP4B) provides a major opportunity to shape the growth of Buckinghamshire over the next 15 years and beyond. It will identify areas for new housing and employment, while also designating areas for protection and enhancement, such as our valued landscapes, natural habitats and heritage.

Earlier this year we carried out a public engagement survey on the draft vision and objectives for the LP4B. We received about 700 responses to the Local Plan for Buckinghamshire Vision and Objectives which we are in the process of analysing and considering.

We have now published an [interactive map and basic details](#) of the 1,000 or so sites which were submitted in response to our two Calls for Brownfield Sites and our Wider Call for Sites. We are assessing these sites for their suitability, availability and achievability

(including viability) to accommodate development. This work will help us to shape the first Buckinghamshire Housing and Economic Land Availability Assessment (HELAA).

Our next local plan public engagement work is likely to take place in early 2024, subject to Cabinet approval. This will be on possible high-level growth scenarios for the spatial distribution of new development to meet assessed levels of housing and employment need.

PickMeUp expands to Flackwell Heath

Wycombe's PickMeUp on-demand bus service, introduced by Buckinghamshire Council to reach residents not serviced by regular bus routes, has expanded to include Flackwell Heath. The expansion will help improve links from Flackwell Heath to Loudwater, Cressex, Booker and other parts of town.

Launched as a pilot in September 2022, it is funded by a three-year, central Government Rural Mobility Fund grant. It has proved popular, providing 1,500 rides per week and running Monday to Friday from 6am to 7pm.

Now after reviewing how the service is being used, and in response to requests from the local community, the council and operator Carousel Buses are pleased to extend the benefits of the service to many more potential passengers.

An additional vehicle will now operate at the morning and afternoon peak to keep up with demand. Fares reflect other local bus services and bus tickets such as Wycombe Smart Zone tickets and Concessionary Bus Passes are valid.

Bookings are made in advance via the PickMeUp High Wycombe app or by calling 01494 296021 to arrange a convenient nearby pickup point.

www.pickmeupwycombe.co.uk

Cost of Living update

Community Food Chain Campaign

The Helping Hand team has recently launched the Community Food Chain Campaign which aims to increase public food bank donations and raise awareness of volunteering opportunities available at local food support organisations. You can find out more here – <https://www.buckinghamshire.gov.uk/campaign/community-food-chain/>

If you would be interested in finding out how you can support this campaign please contact Hannah Tomlin, Food Lead Co-ordinator, Helping Hand Team – hannah.tomlin@buckinghamshire.gov.uk

Helping Hand team/ MEAM referrals

The Helping Hand team has identified a cohort of residents who are within Opportunity Bucks areas and have made a high number of applications for support from the team. With their agreement, these residents have been referred on to our Making Every Adult Matter (MEAM) Team who can offer intensive support to develop a better understanding of the challenges these residents are facing and help to connect them with additional services who can further support them.

Welcoming Spaces

There are locations throughout the county, including Buckinghamshire libraries and community venues such as churches and halls, that have continued to offer a Welcoming Space to residents throughout the summer months.

Now that we are moving into autumn we are looking at ways in which Welcoming Spaces can again offer residents warm and friendly places to go and meet with others this coming winter. More information on resources and guidance for setting up a Welcoming Space will be available shortly.

If you have any queries in the meantime please contact Laura Davies, Operations Manager, laura.davies@buckinghamshire.gov.uk

Energy Doctor

Buckinghamshire Council has introduced a new Energy Doctor scheme as one of the initiatives funded by its allocation of the Government's UK Shared Prosperity Fund.

Under the scheme, domestic resource efficiency officers are visiting qualifying homes to assess and advise on measures that can reduce energy consumption and costs.

The team also installs suitable low-cost measures in homes such as draught proofing, hot water cylinder insulation jackets, reflective radiator panels, secondary glazing film and LED lights.

To qualify for an Energy Doctor visit, applicants must meet all of the following criteria:

- They rent the property through a private rental agreement, or own and live in the property
- The household has an income of £30,000 or less (before tax), is in receipt of means-tested benefits such as Universal Credit and Council Tax Support, or a member of the household is disabled
- The domestic property has an energy performance certificate (EPC) rating of D, E, F or G, or does not legally require an EPC

To find out more about the Energy Doctor scheme, and to request a visit, go to the [council's website](#).

Have your say on council spending

Our budget consultation is now open and residents and organisations throughout Buckinghamshire are invited to take part.

As with councils across the country, our budgets are under immense pressure, particularly with more and more people needing social care. As a result, some difficult decisions will have to be made.

So it's essential that residents and organisations have their say on where their council tax is spent. The survey is at buckinghamshire.gov.uk/money-matters-consultation. We would also really appreciate your support in sharing this message with people and organisations throughout all our local communities.

The consultation closes at 11.59pm on Sunday 15 October.

Buckinghamshire Council consultations

Current consultations and surveys from Buckinghamshire Council are available to view on our website <https://yourvoicebucks.citizenspace.com/>

South West Chilterns Community Board – Funding Overview 2023/2024

Community Board Fund 2023/2024	Spend to date (30/09/23)	Allocated or potential projects to date (30/09/23)	Remaining budget as of 30/09/23
£116,402	£11,180.75	£72,316	£32,905.25

Completed Funding Applications 2023/2024

Organisation	Project title and description	Funding request from the Community Board	Amount of Contributory Funding	Community Board funding recommendation
Bourne End Academy	Garden Project	£4,000	£4,000	£4,000
Target Magazine	Coronation memory edition	£2,730	£2,750	£2,730
Wild Marlow	Surveying Project	£989.45	N/A as small grant	£989.45
Lane End Youth and Community Centre	Playscheme	£998.32	N/A as small grant	£998.32
Strategic Flood Management Team	Marlow Flood Fayre	£2,000	£4,807.20	£2,000
Wild Marlow	Wildflower Restoration Project	£462.98	N/A	£462.98

Potential/Pre-application Schemes subject to internal due diligence

Organisation	Project title and description	Funding request from the Community Board	Amount of Contributory Funding	Community Board funding recommendation
Finings Wood Community Group	Rooted in the Community	£15,000	£575,000	TBC
Frieth Village Hall	A Warm Community Hall	£14,999	£35,748.96	TBC
Marlow Energy Group	The Smart Energy Show	£1,000	£3,400	£1,000
Marlow FM	Relocation project	£15,000	TBC	TBC
Great Marlow School	Relocation of rowing club for community benefit	£15,000	TBC	TBC
SWCCB project	Remembrance plaque for George Howson Hambleden, Poppy Shop	£3,317	TBC	TBC
Marlow United	Junior Football kit	£1,000 approx (small grant)	N/A	
Fawley Village Trust	Project village hall improvements	£7,000	£7380	TBC
Brighter Futures Together	Help with building	Early discussion	Early discussion	
Singing your Pain Away	Dementia Choir	Early discussion	Early discussion	
Chiltern Society	Tree Planting proposal	Early discussion	Early discussion	

South West Chilterns Community Board – Funding Overview 2023/2024

Highways Schemes				
Organisation	Project title and description	Funding request from the Community Board	Amount of Contributory Funding	Community Board funding recommendation
None for 2023/2024				